

海外動向紹介

オープンデータシンポジウム

2012年12月10日

川島宏一

利活用・普及委員会委員

オープン・データによって 価値が飛躍するデータ処理の類型

1. 悉皆型
2. ハイブリッド型
3. リアル・タイム型
4. 地域パッケージング型
5. 対話型

1. 悉皆型 ——> 行政のパフォーマンス比較

spotlightonspend

Powered by Spikes Cavell

Supported by



Improvement and Efficiency South East

Home

About

Tools & Utilities

South Oxfordshire District Council

Buying Entity

Spend

Carbon

Carbon

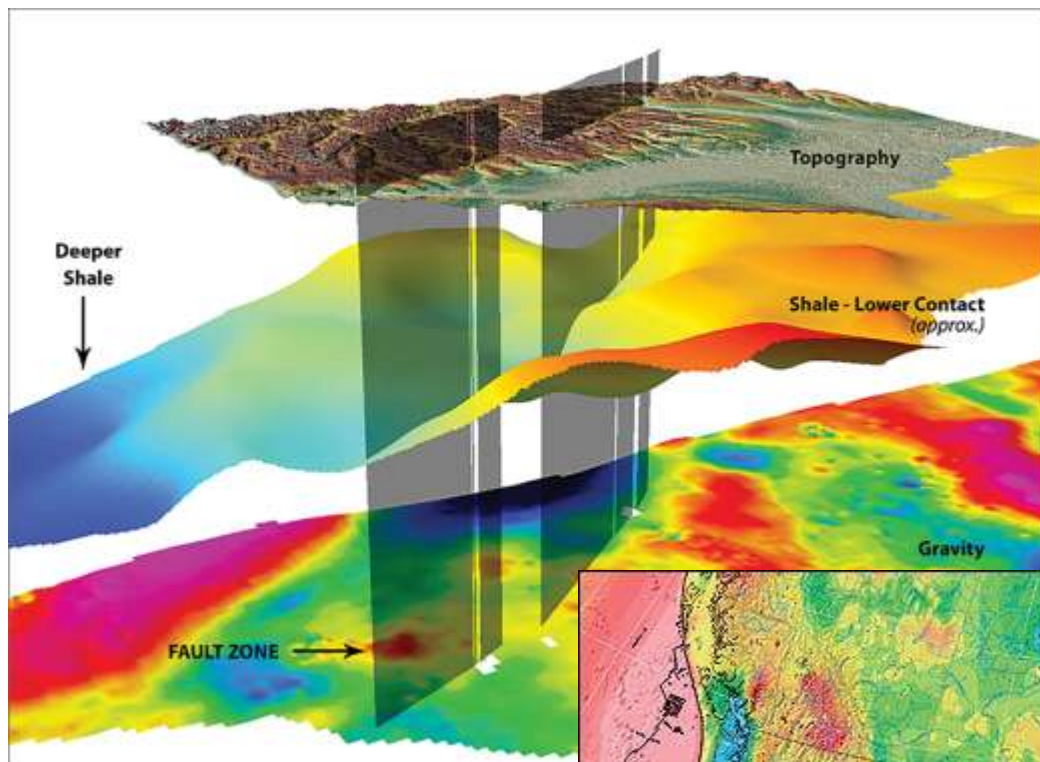
Data Comparison

Select a year and buying entity of the same type

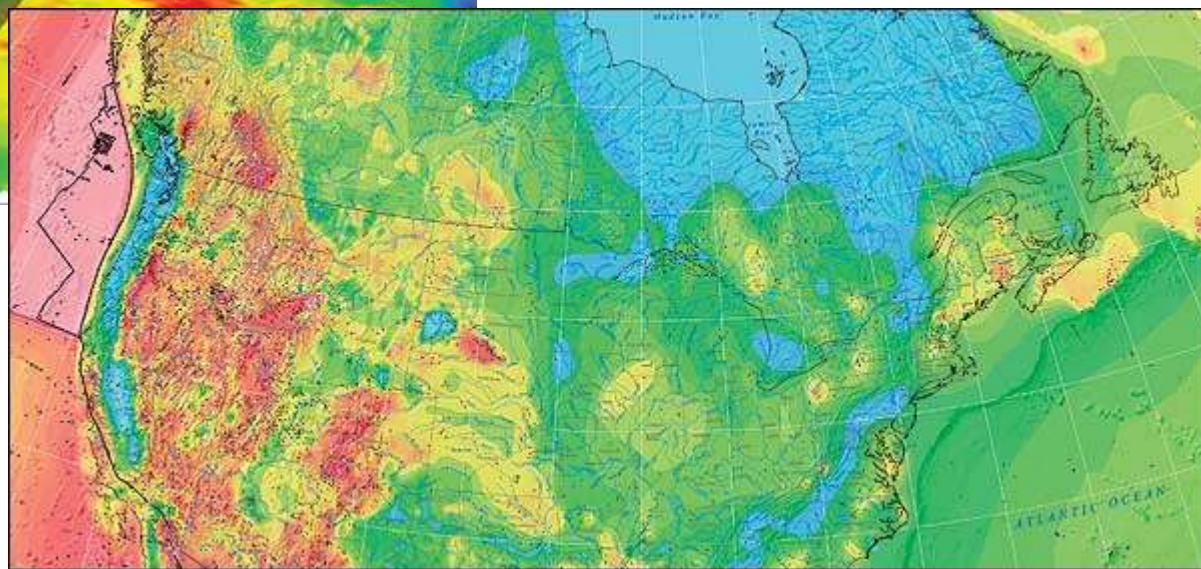
Latest year Select public body Go

	Actual Emissions per £1,000	English District Council average spend	Compared to English District Council average spend
 Total Emissions	63.9 tonnes	40.1 tonnes	+59%
 Output from domestic residences	23.1 tonnes	14.4 tonnes	+61%
 Output from Industrial & Commercial	24.4 tonnes	14 tonnes	+74%
 Output from Transport services	16.4 tonnes	11.7 tonnes	+40%

3D地下構造図 ー一> 企業コスト削減



精密ハザードマップ
ー一> 生活安全性向上



2. ハイブリッド型 → 新サービス創出による経済活性化

[Look Up Policy](#) [Contact Us](#) [Login](#)



FOR GROWERS

Total Weather Insurance

Protect Your Profits From Bad Weather

Start Here

Get your **FREE WEATHER RISK ANALYSIS**

County or Zip Code

Corn

Get Started

- 1 Get Your Weather Risk Report
- 2 Get Custom Weather Insurance Plan
- 3 Weather Happens
- 4 Get Paid Automatically

BRENT B., ILLINOIS
TWI 2012 INSURED

Featured Grower

"TWI gives me a cushion so I can guarantee my livelihood for another year."

ROBERT J., INDIANA
TWI 2012 INSURED

Read More

Interactive Weather History



Explore 30 years of historical **precipitation** and **temperature** data for your fields.

Explore Now

TWI Overview

TOTAL WEATHER INSURANCE (TWI) enables you to lock in profits by insuring against bad weather that can cause yield shortfalls.

PEACE OF MIND

- Profit Protection
- Complements Federal Crop Insurance
- Hassle-Free Coverage

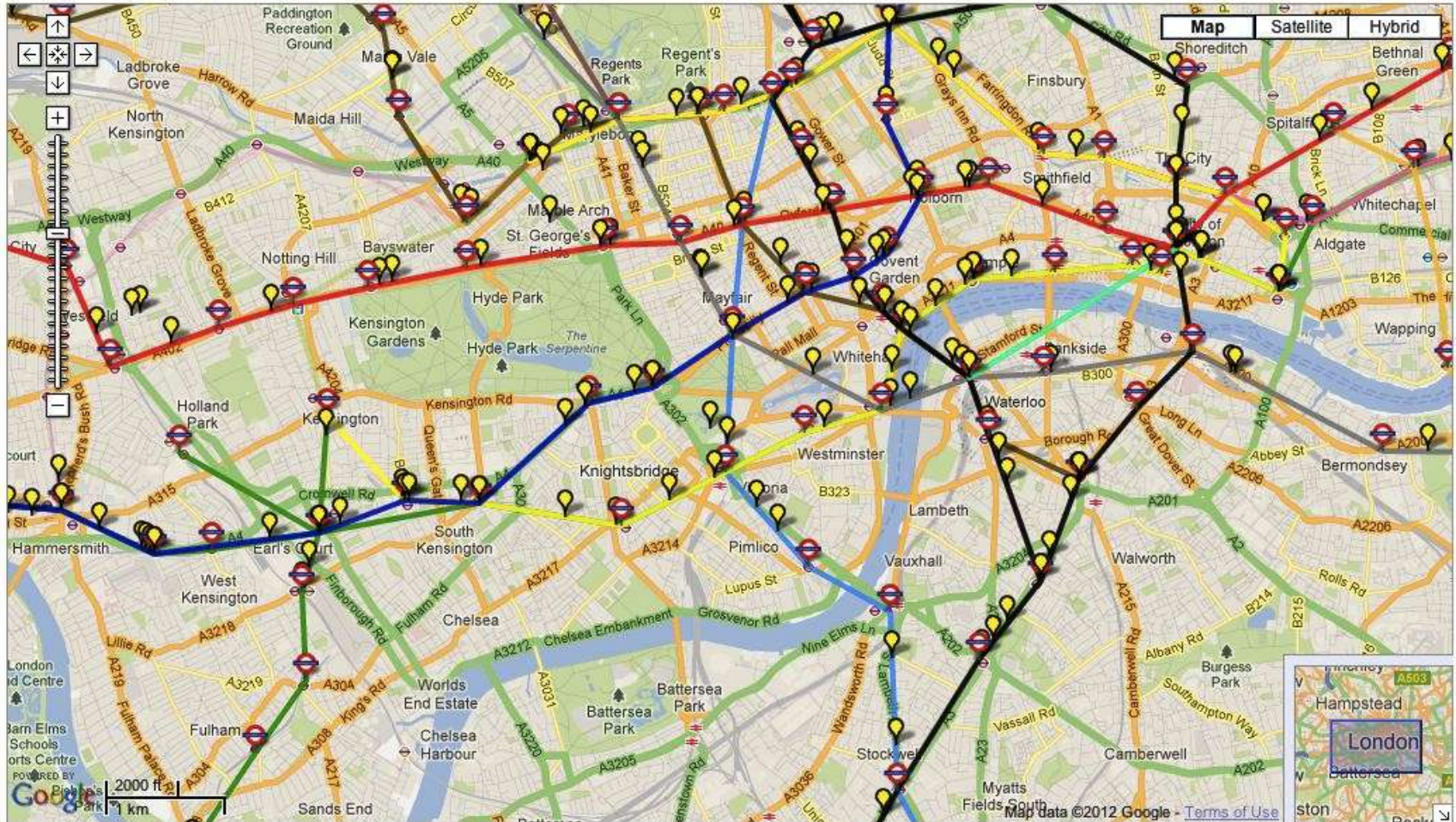
FINANCIAL STABILITY

Launch Overview

3. リアル・タイム型 ——> 国民の利便性向上

Live train map for the London Underground, by Matthew Somerville

Data collected: Wed, 05 Dec 2012 11:58:03 +0000



<http://traintimes.org.uk/map/tube/>

4. 地域パッケージング型 → 行政の効率化



Login · Register

What are you looking for?

search

Home Data News Uses of data Resources About DataGM



Welcome to DataGM

DataGM has been created by public sector partners to free Greater Manchester's public data.

Latest tweet:

DataGM Great article on @MENnewsdesk bit.ly/PFbYba on road accidents using data from datagm. datagm.org.uk/package/road-a... #opendata #ddj 57 days ago · reply · retweet · favorite

Join the conversation



Facts, figures and more

popular data

Bus stops and schedules

ZIP

Bus stop and bus time data for all services within the Greater Manchester boundary. Known technically as "ATCO-CIF".

OPEN DATA

Road Accidents in Greater Manchester

CSV CSV PDF

latest data

Variable Message Signs

CSV PDF

Location of all message signs within the Greater Manchester boundary.

Data Not Open

Traffic Signal Locations

CSV PDF

Location of all traffic signals within the

Data Not Open

<http://datagm.org.uk/>

5. 対話型 一>行政の透明性向上、国民参加

WHERE DOES MY MONEY GO?

Showing you where your taxes get spent

The Daily Bread Country & Regional Analysis Departmental Spending About

The Daily Bread Costs for the British Taxpayer per Day

SALARY
£100,000

SELECT YOUR SALARY

YOUR TAX
£43,066



Where Does My Money Go? is based on OpenSpending, where you can also find the source data.
This is an Open Knowledge Foundation project, developed with generous support from Channel 4's 4iP.

- OpenSpending
- TheDataHub
- OKFN Labs
- YourTopia
- Core team
- Data sources used on this site
- Get in touch and contribute
- Code and making your own
- Privacy Policy

All content, code and data is openly licensed in accordance with the open definition.

OPEN DATA



Total:

- £006,881,000 =

7%



Council tax increase



Council Tax cannot be increased by more than 0%.

Where we spend money

Choose how much money we spend in different areas each year. Use the sliders to balance the budget. For more detailed control over an area's budget click 'More detail'.



1

How we can save money

2

How we can raise income

3

Where we spend money

4

Your summary

Suggestions?

Children's services and education

£27.78m



Consequences

No consequences

More detail

Adult social care

£64.40m



Consequences

No consequences

More detail

Housing and homelessness

£7.10m



Consequences

No consequences

More detail

Culture and leisure

£7.44m



Consequences

No consequences

More detail

Environment and waste

£10.30m



Consequences

No consequences

More detail

Community safety

£6.25m



Consequences

No consequences

More detail

Roads, planning and economy

£19.00m



Consequences

No consequences

More detail

Council support and public engagement

£27.50m



Consequences

No consequences

More detail

Back

Reset sliders

Next

CLICK MAP TO REPORT A PROBLEM

Can't see the map? [Skip this step](#)

PROBLEMS ON THE MAP

PROBLEMS NEARBY

Pavement works not completed

07:34, Sunday

Grease from Dry Cleaners on pavement

18:00, 28 Jul 2012

Sunken Manhole/Cable Access Covers

13:10, 25 Jul 2012

Over flowing rubbish bin Mansell Street

23:01, 24 Jul 2012

Pile of Recycling Bags

19:26, 21 Jul 2012

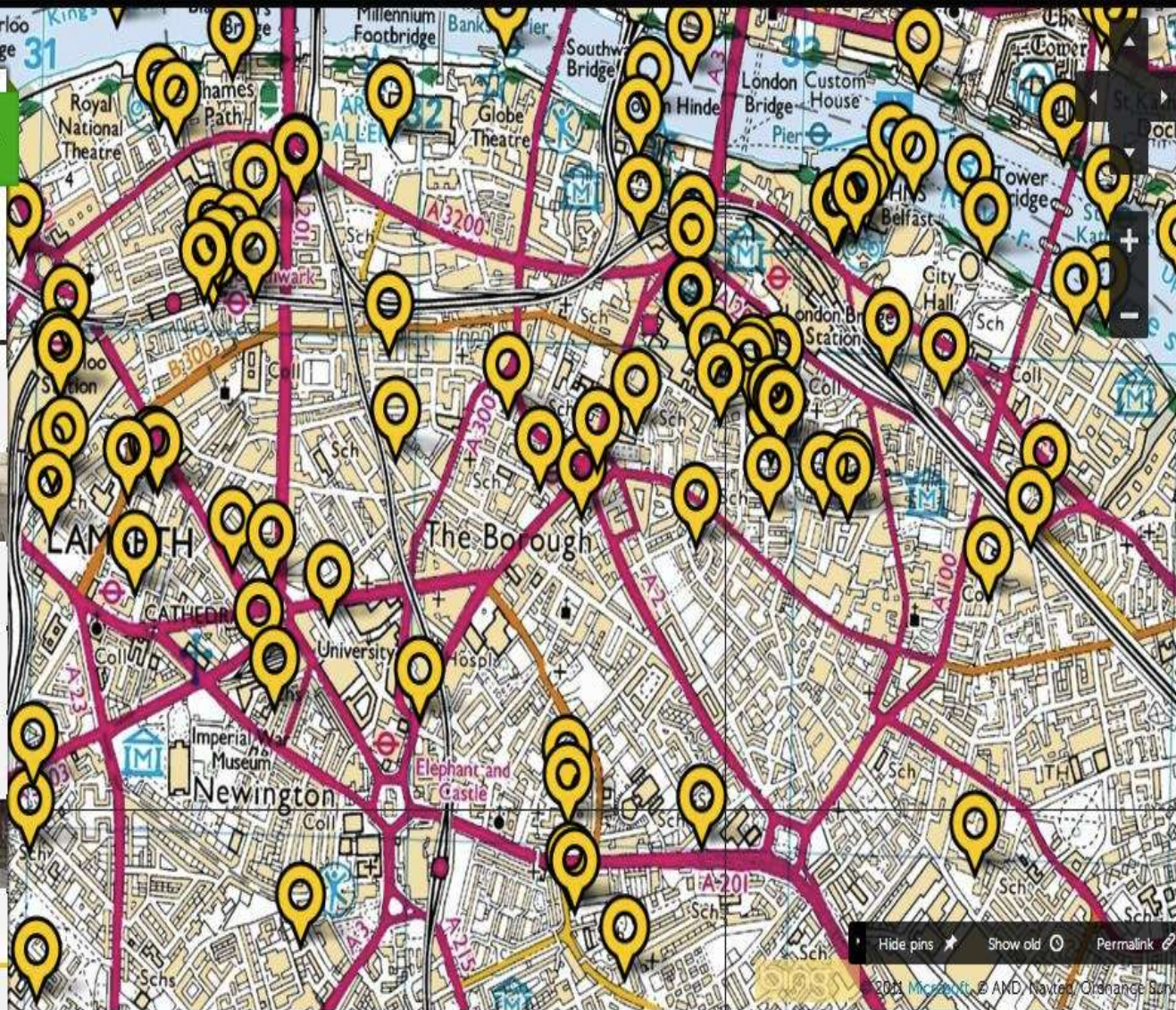
Over flowing bin

18:19, 21 Jul 2012

RIP OFF ? Legal? Discrimination again

10:41, 21 Jul 2012

Get updates



Hide pins Show old Permalink

© 2012 Microsoft AND Navteq, Orange Bird

いま、私達に、求められていること

1. 世界中の先進事例をどんどん真似してみよう
2. やれるところからやってみて、小さな成功を積み重ねよう
3. 社会課題解決・ストーリー主導で行こう
4. 身近なまたは専門的な公共データの公開で、住民・企業にオープンデータのメリットを実感してもらおう
5. 自治体、大学、情報化推進組織などと連携して、ハッカソン等を開催してみよう
6. 成長戦略のテーマとして考えてみよう
7. 情報部門の役割を進化させよう：情報システムの構築、利活用から、情報利活用によるイノベーションの創出へ